



\*Known as SBI Emp Navjeevan CHSL. Proposed name is Nandadeep.



# Re:Imagine with PCPL

Every landmark begins with a dream. For PCPL, that dream started in 2013, to craft homes that bring families closer, create lasting memories, and stand the test of time. From one humble step to over 2200 happy families and 13+ lakhs sq. ft. of living spaces completed, our journey has always been guided by trust, quality, and timely delivery.



Artist's Impression Only





## **A Renewed Way of Living**

Nandadeep in Borivali West is envisioned with 2 & 3 BHK residences that bring together modern comfort and thoughtful amenities. With excellent connectivity to schools, hospitals, and transport hubs, it is designed to offer families affordable luxury and everyday convenience.



# Living Room





# Master Bedroom



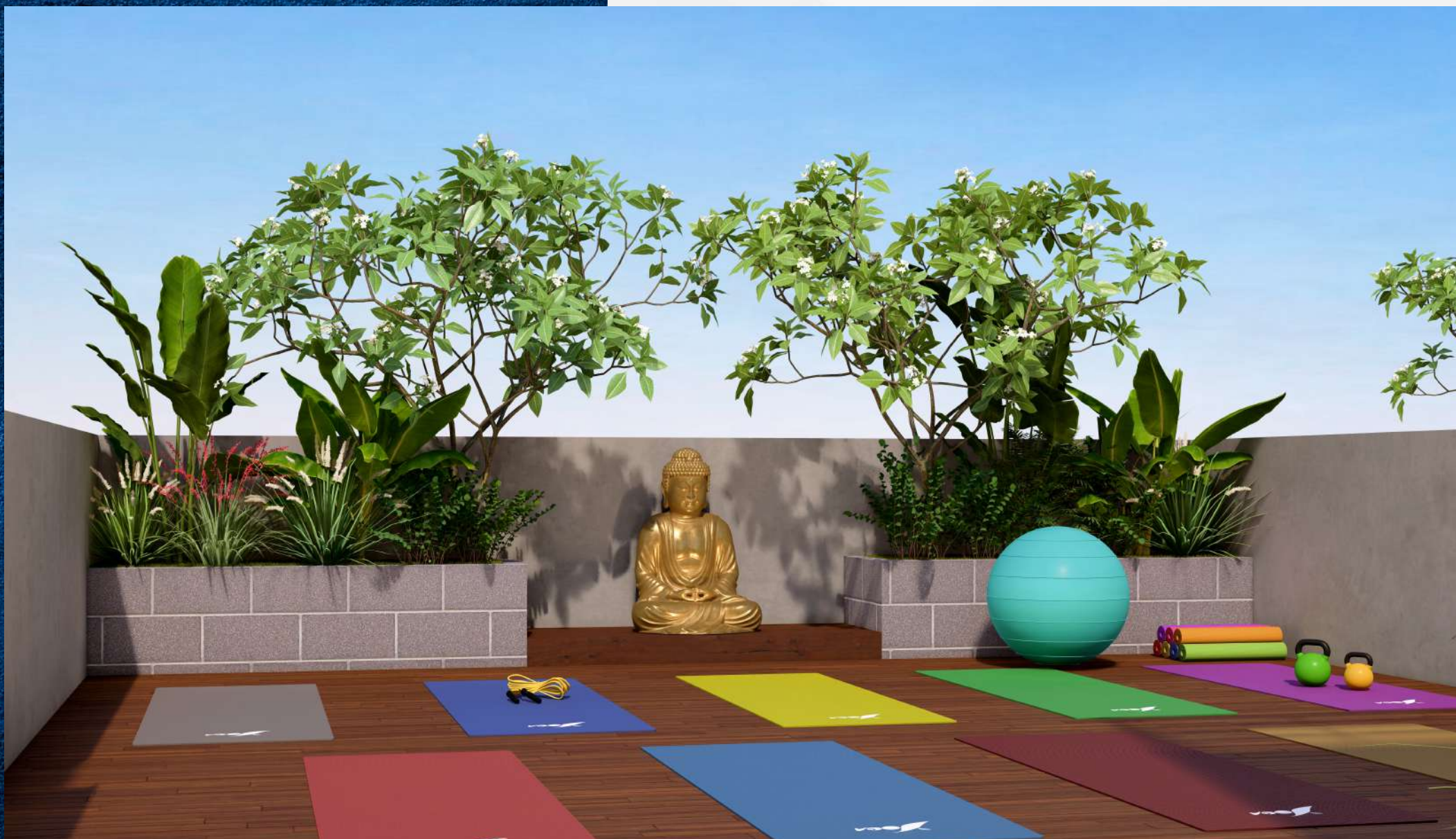




# Fitness Centre



# Meditation Zone







# Party Deck



# Seating Area

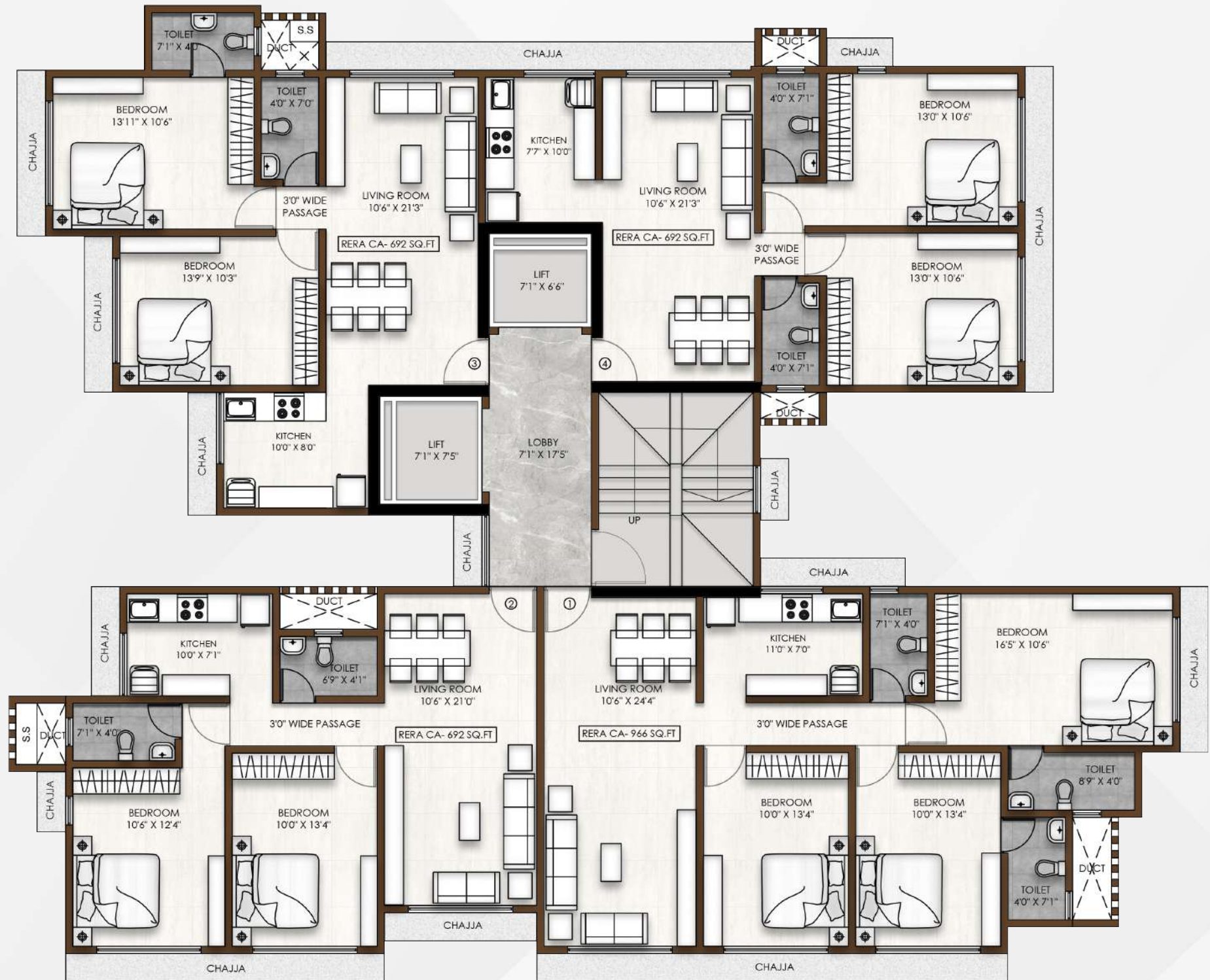






Toddler's Play Area





← 30 FEET WIDE ROAD →



THE PLANS ARE SUBJECT TO CHANGE BY THE LOCAL AUTHORITIES.  
THE DRAWING ARE NOT TO SCALE

# Typical Floor Plan



# Terrace Floor Plan



THE PLANS ARE SUBJECT TO CHANGE BY THE LOCAL AUTHORITIES.  
THE DRAWING ARE NOT TO SCALE



# Ground Floor Plan



## LEGEND

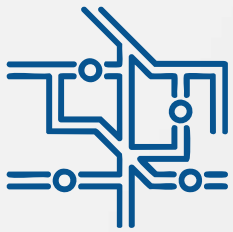
- ① ENTRANCE LOBBY
- ② LIFT
- ③ ELECTRICAL METER PANEL
- ④ SERVANT TOILET
- ⑤ MECHANISED PARKING



THE PLANS ARE SUBJECT TO CHANGE BY THE LOCAL AUTHORITIES.  
THE DRAWING ARE NOT TO SCALE



# Your World. Well Within Reach.



## Transit:

Borivali Railway Station : **2.20 km**  
S.V. Road : **1.30 km**  
Western Express Highway : **1.80 km**  
Link Road : **2.00 km**  
Eksar Metro Station : **1.90 km**



## Banks:

Axis Bank : **0.19 km**  
State Bank of India : **0.45 km**



## Recreation:

Joggers Park MCF  
Grounds : **1.50 km**



## Hospitals:

Bhagvati Hospital : **0.13 km**

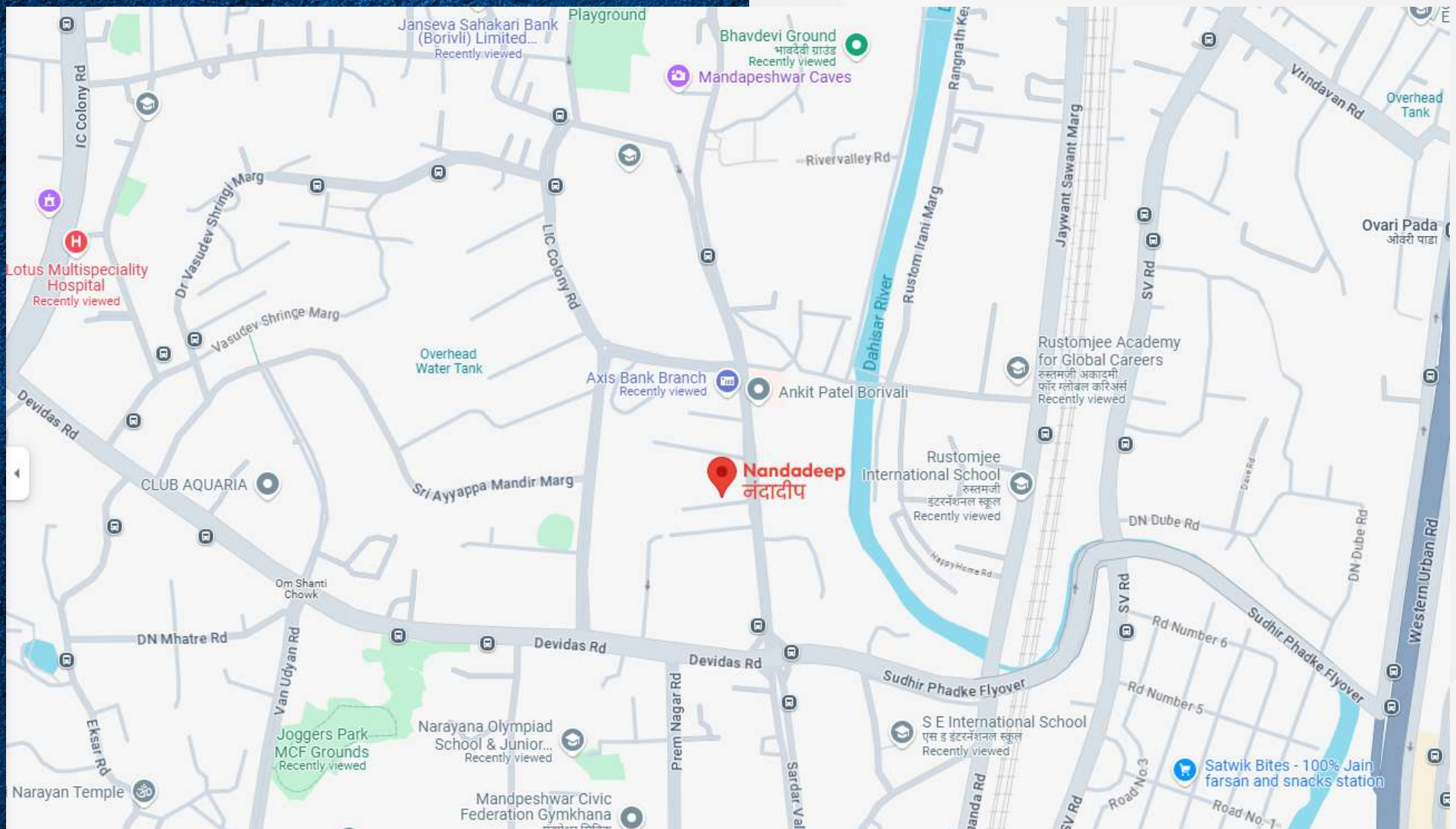


## Educational Building:

Rustomjee Cambridge  
International School : **0.70 km**  
JBCN International School : **1.50 km**



# A Neighbourhood That Truly Feels Like Home.



**Nandadeep**  
SVP Road, Borivali (W) – 400 103



MahaRERA No: PR1180002500522

This project has been registered with MahaRERA under name of Redevelopment of SBI EMP NAVJEEVAN CHSL, available on <https://maharera.maharashtra.gov.in>



+91 89212 85932 | [www.pranavconstructions.com](http://www.pranavconstructions.com)

Registered Office: 1001, DLH Park, 10th Floor, S.V. Road,  
Opp. Goregaon MTNL, Goregaon (W), Mumbai – 400 104.

This property is mortgaged with Aditya Birla Housing Finance Ltd. The No Objection Certificate (NOC)/ permission of the mortgagee Bank would be provided for the sale of flats/ units/property as and when required. Project approved and financed by Aditya Birla Housing Finance Ltd. Conditions apply.

Disclaimer:

Pranav Constructions Limited is proposing, subject to receipt of requisite approvals, market conditions and other considerations, to make an initial public offer of its equity shares and has filed a draft red herring prospectus ("DRHP") with the Securities and Exchange Board of India ("SEBI"). The DRHP is available on the website of the Company at <https://www.pranavconstructions.com/investor-corner/drhp>, website of SEBI at [www.sebi.gov.in](http://www.sebi.gov.in) as well as on the websites of the book running lead managers, Centrum Capital Limited and PNB Investment Services Limited, respectively, and the websites of National Stock Exchange of India Limited and BSE Limited at [www.nseindia.com](http://www.nseindia.com) and [www.bseindia.com](http://www.bseindia.com), respectively. Any potential investor should note that investment in equity shares involves a high degree of risk and for details relating to such risk, see "Risk Factors" of the RHP, when available. Potential investors should not rely on the DRHP filed with SEBI for any investment decision.