



RUSHABH
RESIDENCY

THE PERFECT *LOCATION*

Situated in Malad, Mumbai's busiest suburb, Rushubh Residency by PCPL is Malad's latest attraction. The project has options for well-designed 1 & 2 BHKs and boast of world class amenities which include multiple purpose deck, walking track, yoga and meditation area, toddlers play area, bonfire area with covered seating. The location is easily accessible and is in close proximity to schools, colleges, hospitals and is easily accessed by rail and road.

Welcome to Malad.

Home to everything you want.

Seamlessly connected to everything you need.



Off. Haji Bapu road, Malad East, Mumbai 400097

INFINITE
MEMORIES
AND A PERFECT
LOCATION TO ENJOY
THEM ALL

Toddlers Play Area



AMENITIES



Multipurpose Deck

Bonfire area with covered seating.





Walking Track

Yoga/Mediation area





Senior citizens seating area

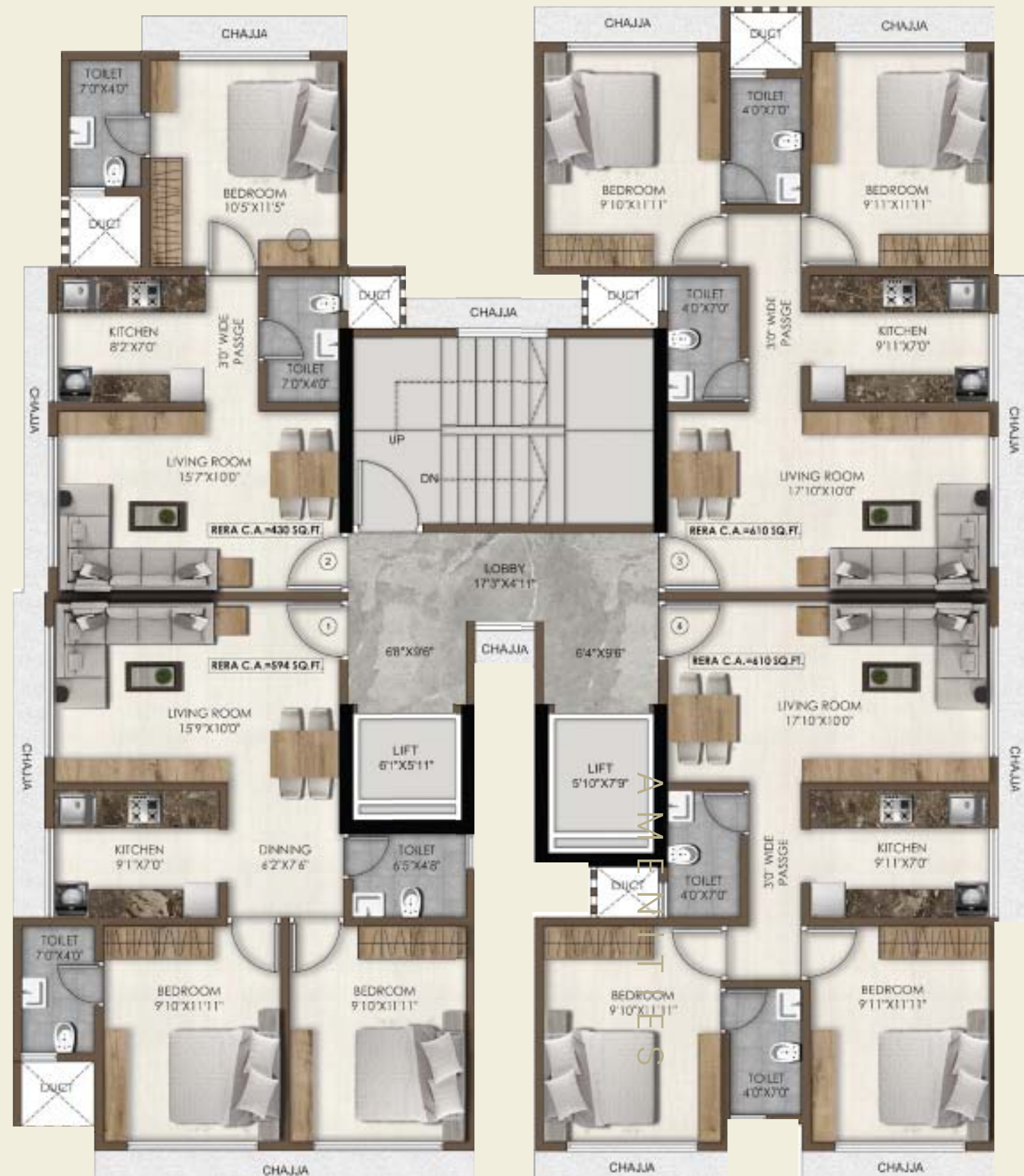


Reflexology zone

FLAT Configuration

1 BHK :
430 Sq.ft

2 BHK :
553 Sq.ft , 594 Sq.ft,
596 Sq.ft, 610 Sq.ft

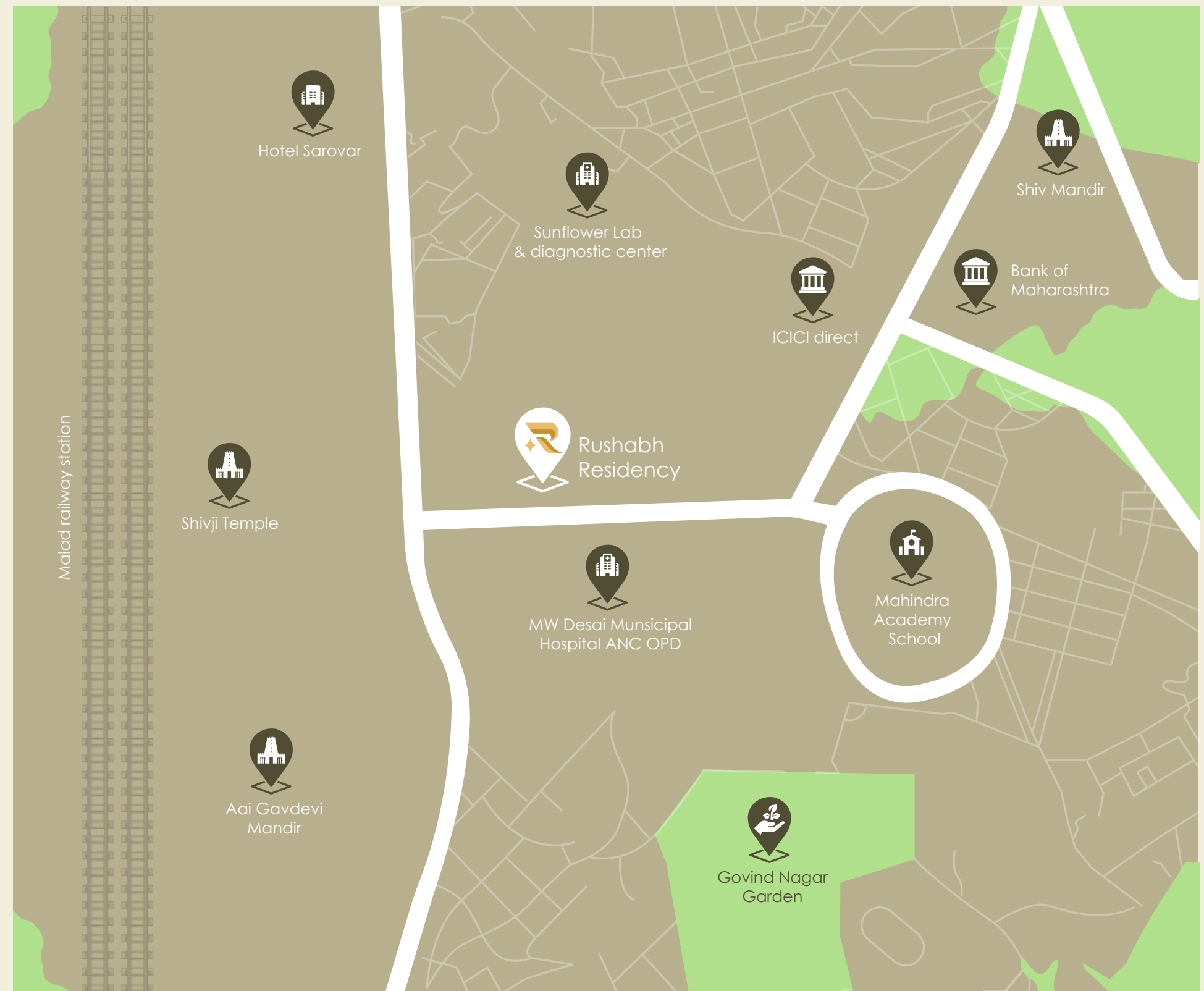


FLOOR PLAN



LOCATED AT THE *CENTER OF EVERYTHING*

-  Expressway - 1.4 Km
-  Giri Puspa park - 650 m
-  Govind Nagar garden - 400 m
-  School - 170 m
-  College - 550 m
-  Hospital - 100 m
-  Malad railway station - 1.3 km
-  Pathanwadi metro station - 1.4 km
-  Bank - 350 m



BUILDING HOMES AND A *LEGACY*

A pioneer in the space of affordable luxury homes, PCPL has successfully developed and delivered over 3,00,000 sq.ft of top-quality residential and commercial properties. PCPL don't just build homes, they build memories with several such loving homes have become their legacy.



SILVERENE



SPARSH



GALA

BUILDING HOMES AND A *LEGACY*



MAYUR RESIDENCY



NIRVANA

MAKE MORE ROOM FOR
more memories



SCAN To Download
The App



022-62769927 / 77

Follow Us:  /WeArePCPL  /WeArePCPL  @WeArePCPL

Corporate Office: 1001, DLH Park, 10th Floor, SV. Road, Opp. Goregaon
MTNL, Goregaon (West), Mumbai - 400062, Maharashtra, India.

MahaRERA No: P51800034099

PCPL
REDEVELOPING HOMES
REBUILDING COMMUNITIES